



## WYCLIFFE HALL

### Environment & Sustainability Statement of Intent

#### Background

At Wycliffe we want to see a world with a stable climate, filled with abundant nature that people and communities have access to locally. We believe there is a biblical mandate to care for all of God's creation as a core part of its mission and manifests this how it treats its land, buildings, investments and other assets. As a Hall we want to play our full role, in collaboration with others, to protect and enhance the diversity and abundance of life on Earth, and to restore and maintain the health of our planet's life sustaining systems.

Oxford University has published their environmental sustainability [strategy](#). The University hopes that colleges 'will implement similar measures and commitments to those' within this strategy document. The strategy sets a target for Oxford University to achieve **net zero carbon and biodiversity net gain by 2035** to address the global challenges of climate change and biodiversity loss in the organisation. It is also reasonable to expect that more colleges will develop ambitious net zero plans as a result of the university-wide environmental sustainability strategy.

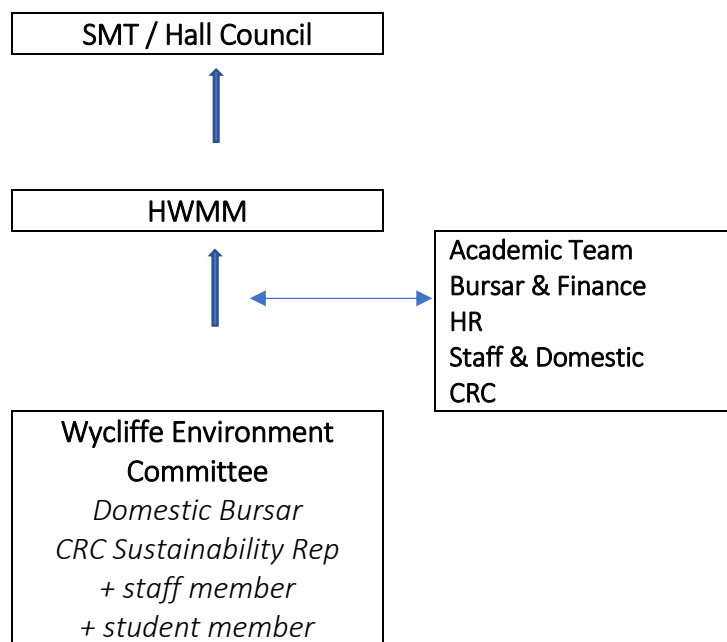
By adopting the targets **of net zero carbon emissions and biodiversity net gain by 2035**, Wycliffe Hall advocates for the urgent need to address Climate Change and biodiversity loss, demonstrating the need and inspiring others to follow in our footsteps.

#### How do we achieve this?

Building on the priority areas laid out in the current University Sustainability Strategy Wycliffe will focus on the following **7 priority areas**:

##### 1. Governance:

Environmental and Sustainability issues affect many areas of Hall life and in order to ensure that we coordinate our activity and focus efficiently, there must be clear governance oversight. Ultimately, SMT is the main decision-making group for the Hall supported by Hall Council.



The Wycliffe Environment Committee will produce an annual Wycliffe Sustainability Action Plan which will clearly set out our goals and measure progress to achieve them. The Policy and Action Plan will be submitted to SMT & Hall Council for approval. The Wycliffe Sustainability Action Plan will be key to ensuring the Hall supports the goal of net zero carbon emissions and biodiversity net gain by 2035. The Wycliffe Environment Committee will produce an annual report, submitted to SMT and Hall Council in Trinity Term.

The Domestic Bursar has the operational lead for many of the work strands required to deliver our sustainability targets. The post holder commits dedicated time and resources to support the delivery of our Action Plan together with all those with responsibilities in the Action Plan

## 2. Finance:

Wycliffe Hall aims to ensure that we have sufficient funding to deliver improvements in Hall to reduce our carbon footprint and to increase our biodiversity. For example, we are currently awaiting planning for a major regeneration project of the main hall, which will significantly improve the energy efficiency of these Victorian building that are currently in a poor state of repair.

## 3. Estates & Biodiversity:

Wycliffe Hall has a mix of buildings that have evolved as the Hall has developed over the last 150 years. These buildings pre-date modern building regulations and they have inefficient heating, fabric and lighting solutions.

Improving the energy efficiency of our buildings will be critical to achieving our policy aims. As indicated above, main site development buildings represent our highest need in terms of improvement. We have worked with our design team to deliver the highest standard of energy efficiency that we can afford. For future new builds, as outlined in the Hall's redevelopment plans, we would aspire to the highest affordable standard of energy solution available.

For the remainder of our buildings, we propose to invest in a decarbonisation master plan to determine how we can transition away from our current high carbon solution and propose a priority of work that we can tackle.

In addition to major capital projects, we will work with our Wycliffe community to build upon and improve our existing initiatives, such as reducing our energy consumption and waste as well as improve opportunities to recycle where practical. Every member of Wycliffe has a role to play to support a reduction in our carbon footprint.

*Biodiversity:* Wycliffe Hall benefits from beautiful outdoor spaces and we recognise the importance of our green space within the urban setting. We will work with the University and other Colleges to connect our outdoor spaces in the most beneficial approach possible. We will conduct a biodiversity audit to benchmark our current provision and propose ways to make a positive contribution to our location in the City.

Working with a specialist landscape consultant, for phase two of our redevelopment, our planning application seeks to enhance the green spaces.

#### 4. Catering & Events:

The catering industry is experiencing a revolution in terms of menu design and supply chain considerations in order to reduce impact on the environment. Wycliffe, are fortunate to work with Wilson Vale who have a strong vision for [sustainability](#). Our team are passionate about delivering menus based on seasonal produce sourced as locally as possible. They are working closely with our core suppliers to reduce our carbon footprint. Whilst improving menu design and sourcing locally is critical, we also have to encourage our community to make better choices to evolve to better balanced, planet friendly diets. We will articulate progressively achievable targets in the Wycliffe Sustainability Action Plan and deliver effective communication to our community to enable people to make informed choices.

#### 5. Procurement & Resources:

Buying goods and procuring services generates an 'upstream' impact on the carbon, biodiversity and social impacts of the goods that we buy. As outlined with food procurement above, we can exert influence on our suppliers in support of our sustainable values. The University of Oxford have acknowledged that from the top 5 impacts on their biodiversity, 3 of the items identify the supply chain as root cause.

Furthermore, our student population increasingly make on-line orders resulting in dozens of deliveries each week. We are exploring how we should actively encourage and incentivise our suppliers and contractors to work to the same environmental goals that we pursue.

We should work to reduce and recycle our waste across all of our activities.

#### 6, Transport & Travel:

Academic staff, students, College staff and guests all generate a reasonable travel and transport impact. Whilst maintaining our academic research, teaching and commercial goals, we must be mindful of the carbon footprint we generate from transport and travel emissions. We all must consider how we can reduce unnecessary travel and deliver policies that encourage our community to make the right choices. We will support the work of the newly formed DBC/EBC Transport & Travel sub-committee which seeks to collaborate and understand the emerging City Council's policy direction.

## 7. Community:

People and our community sit at the heart of everything that we do in Wycliffe. Our last priority focuses on making sure that we educate, encourage and empower all Wycliffe members to engage in activities that help to reduce our impact on the environment.

To make progress against each of the 7 priority areas outlined above, the Wycliffe Sustainability Action Plan will be our vehicle for detailing the work that we need to undertake and for measuring our progress.

Additionally, we will seek opportunities to inform and engage with all members of Hall including staff, students and the Hall wider community such as the alumnae. We will aim to produce a termly newsletter to update all Wycliffe members on the initiatives that we are progressing and to gather support for the changes that we are all going to need to embrace.

.